



**KMS AG
CONSULTING**

33972 Texas St
Alhambra, OR 97321

Sample 656-020124-123

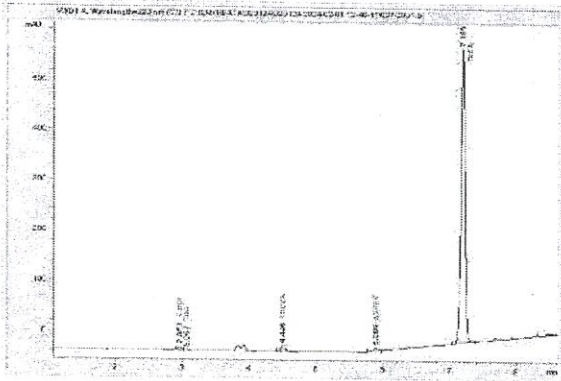
Blackberry Skunk

Sample Submitted: 02-01-2024; Report Date: 02-06-2024

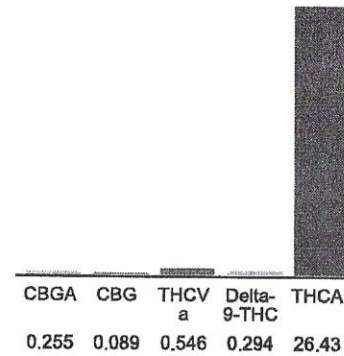
Blackberry Skunk

Plant Material: Hemp Flower

Chromatogram



Cannabinoid Profile



Cannabinoid Profile by HPLC

0.29%
Delta-9-THC

0.00%
CBD

27.61%
Total Cannabinoids

Cannabinoid	% wt	mg/g
CBGA	0.255	2.55
CBG	0.089	0.89
THCVa	0.546	5.46
Delta-9-THC	0.294	2.94
THCA	26.43	264.3
Total Cannabinoids	27.61	276.1
Calculated Total THC	23.47	234.73
Calculated CBD Yield	0.00	0.00
Calculated Total THC = Delta-9-THC + 0.877 * THCA		
Calculated Maximum CBD Yield = CBD + 0.877 * CBDA		

Marin Analytics, LLC
250 Bel Marin Keys Blvd, Suite D4
Novato, CA 94949

833-321-TEST / info@marinanalytics.com

Mike Clemmons
Lab Manager



**KMS AG
CONSULTING**

33972 Texas St
Alhambra, OR 97321

Sample 656-092023-009

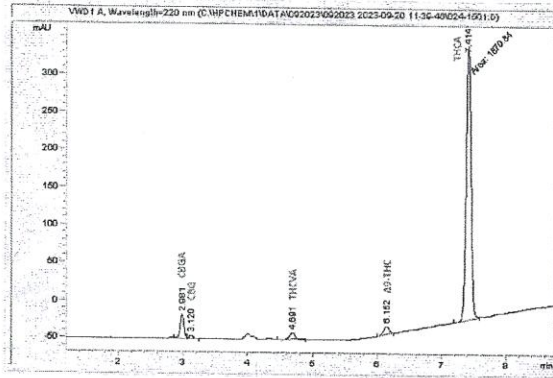
Jack Herer

Sample Submitted: 09-20-2023; Report Date: 09-26-2023

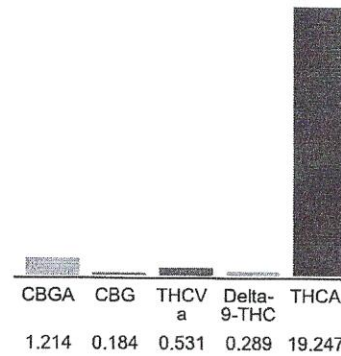
Jack Herer

Plant Material: Flower

Chromatogram



Cannabinoid Profile



Cannabinoid Profile by HPLC

0.29%
Delta-9-THC

0.00%
CBD

21.47%
Total Cannabinoids

Cannabinoid	% wt	mg/g
CBGA	1.214	12.14
CBG	0.184	1.84
THCVa	0.531	5.31
Delta-9-THC	0.289	2.89
THCA	19.25	192.47
Total Cannabinoids	21.47	214.7
Calculated Total THC	17.17	171.69
Calculated CBD Yield	0.00	0.00

Calculated Total THC = Delta-9-THC + 0.877 * THCA
Calculated Maximum CBD Yield = CBD + 0.877 * CBDA

Marin Analytics, LLC
250 Bel Marin Keys Blvd, Suite D4
Novato, CA 94949
833-321-TEST / info@marinanalytics.com

Sara Biancalana
Sara Biancalana
Chief Scientist

This sample has been tested by Marin Analytics, LLC using valid testing methodologies and a quality system. Values reported relate only to the sample tested. Marin Analytics, LLC makes no claims as to the efficacy, safety, or other risks associated with any detected or non-detected levels of any compounds reported herein. This Certificate shall not be reproduced except in full without the written approval of Marin Analytics, LLC. Copyright 2023 Marin Analytics, LLC All Rights Reserved.



CERTIFICATE OF ANALYSIS



REPORT PREPARED FOR:

KMS AG Consulting

PROJECT# 25002939

LAB ID 55006905

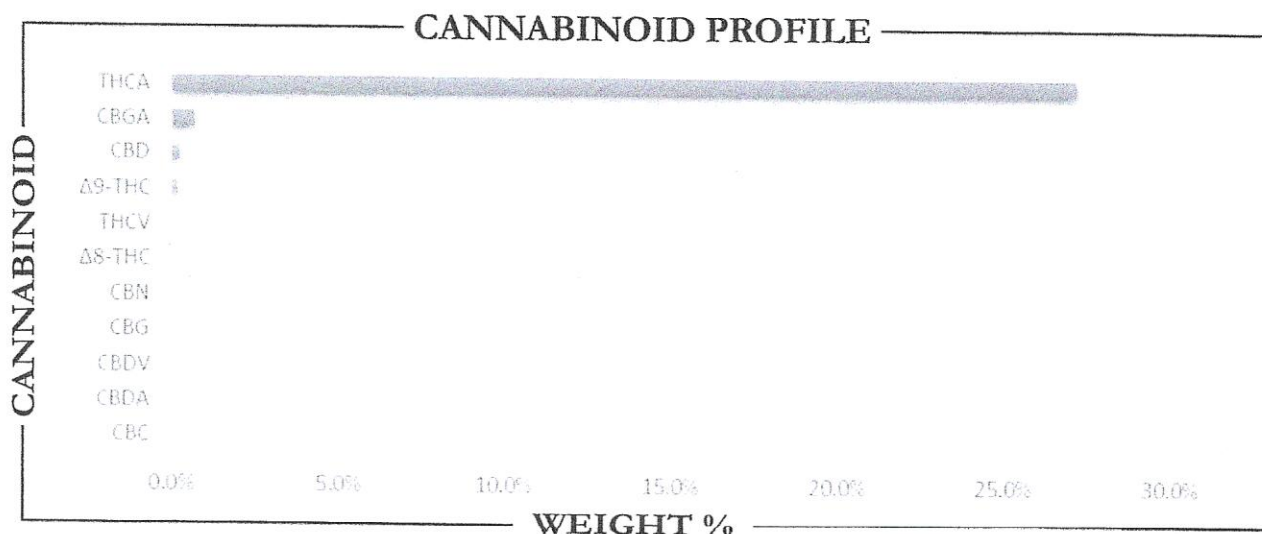
REPORT DATE 1/23/2025



SAMPLE NAME: Chem Cake Trim

DATE RECEIVED: 1/22/2025

THCA	TOTAL CBD	TOTAL CANNABINOIDS
27.19%	0.26%	28.31%



CANNABINOID	WEIGHT %	MG/G
CBC	ND	ND
CBD	0.26	2.56
CBDA	ND	ND
CBDV	ND	ND
CBG	ND	ND
CBGA	0.67	6.72
CBN	ND	ND
Δ8-THC	ND	ND
Δ9-THC	0.19	1.89
THCA	27.19	271.9
THCV	ND	ND
Total CBD	0.26	2.56
Total CBG	0.59	5.89
Total THC	24.03	240.3

Analysis Method: TP-POT-06
 By: HPLC-AWD
 Total THC = (0.877 x THCA) + Δ9-THC
 Total CBD = (0.877 x CBD) + CBDA
 Total CBG = (0.877 x CBGA) + CBG
 ND = Not Detected

Prepared By: TJS Prepared Date: 1/22/2025
 Analyzed By: TJS Date Analyzed: 1/22/2025
 Analysis Batch: JAN2225A-POT



APPROVED BY:
JUSTIN HALL

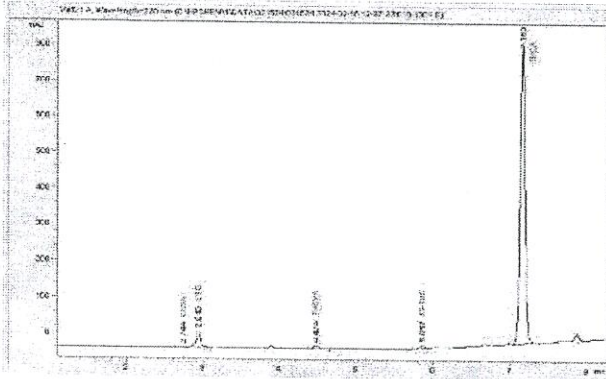
J. Hall

1/23/2025

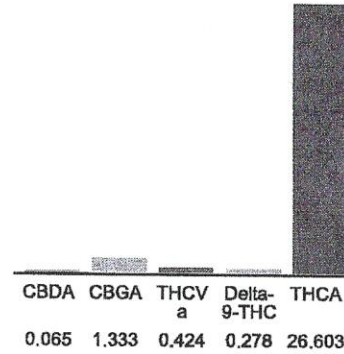
Ice Cream Cake

Plant Material: Hemp Flower

Chromatogram



Cannabinoid Profile



Cannabinoid Profile by HPLC

0.28%
Delta-9-THC

0.00%
CBD

28.70%
Total Cannabinoids

Cannabinoid	% wt	mg/g
CBDA	0.065	0.65
CBGA	1.333	13.33
THCVa	0.424	4.24
Delta-9-THC	0.278	2.78
THCA	26.6	266.03
Total Cannabinoids	28.70	287.0
Calculated Total THC	23.61	236.09
Calculated CBD Yield	0.06	0.57

Calculated Total THC = Delta-9-THC + 0.877 * THCA
 Calculated Maximum CBD Yield = CBD + 0.877 * CBDA

Marin Analytics, LLC
 250 Bel Marin Keys Blvd, Suite D4
 Novato, CA 94949

833-321-TEST / info@marinanalytics.com

Mike Clemmons
 Lab Manager

This sample has been tested by Marin Analytics, LLC using valid testing methodologies and a quality system. Values reported relate only to the sample tested. Marin Analytics, LLC makes no claims as to the efficacy, safety, or other risks associated with any detected or non-detected levels of any compounds reported herein. This Certificate shall not be reproduced except in full without the written approval of Marin Analytics, LLC. Copyright 2023 Marin Analytics, LLC All Rights Reserved.



Certificate of Analysis

WNC CBD
PO BOX 17865
Asheville, NC 28816
info@wnc-cbd.com
828-329-5835

Sample: 04-22-2024-49137W7021
Sample Received: 04/22/2024;
Report Created: 08/29/2024; Expires: 04/23/2025

Han Solo
Plant



23.441 % Total THC	0.241 % Δ-9 THC
27.860 % Total Cannabinoids	<LOQ % Total CBD

Cannabinoid

(Testing Method: HPLC, CON-P-3000)
Date Tested: 04/22/2024

Complete

Analyte	LOD	LOQ	Mass	Mass
	%	%	%	mg/g
Δ-8-Tetrahydrocannabinol (Δ-8-THC)	0.0500	0.0750	ND	ND
Δ-9-Tetrahydrocannabinol (Δ-9-THC)	0.0500	0.0750	0.241	2.410
Δ-9-Tetrahydrocannabinolic Acid (THCA-A)	0.0500	0.0750	26.454	264.540
Δ-9-Tetrahydrocannabiphorol (Δ-9-THCP)	0.0500	0.0750	ND	ND
Δ-9-Tetrahydrocannabivarin (Δ-9-THCV)	0.0500	0.0750	ND	ND
Δ-9-Tetrahydrocannabivarinic Acid (Δ-9-THCVA)	0.0500	0.0750	ND	ND
R-Δ-10-Tetrahydrocannabinol (R-Δ-10-THC)	0.0500	0.0750	0.189	1.890
S-Δ-10-Tetrahydrocannabinol (S-Δ-10-THC)	0.0500	0.0750	ND	ND
9R-Hexahydrocannabinol (9R-HHC)	0.0500	0.0750	ND	ND
9S-Hexahydrocannabinol (9S-HHC)	0.0500	0.0750	ND	ND
Tetrahydrocannabinol Acetate (THCO)	0.0500	0.0750	ND	ND
Cannabidivarin (CBDV)	0.0500	0.0750	ND	ND
Cannabidivarinic Acid (CBDVA)	0.0500	0.0750	ND	ND
Cannabidiol (CBD)	0.0500	0.0750	ND	ND
Cannabidiolic Acid (CBDA)	0.0500	0.0750	ND	ND
Cannabigerol (CBG)	0.0320	0.0750	<LOQ	<LOQ
Cannabigerolic Acid (CBGA)	0.0320	0.0750	<LOQ	<LOQ
Cannabinol (CBN)	0.0500	0.0750	0.780	7.800
Cannabinolic Acid (CBNA)	0.0500	0.0750	ND	ND
Cannabichromene (CBC)	0.0500	0.0750	ND	ND
Cannabichromenic Acid (CBCA)	0.0500	0.0750	ND	ND
Total	0.0500	0.0750	0.196	1.960
			27.860	278.600

Total THC = THCa * 0.877 + Δ9-THC; Total CBD = CBDa * 0.877 + CBD; LOQ = Limit of Quantitation; ND = Not Detected.

Total THC Measurement of Uncertainty: ± 0.040%
Total CBD Measurement of Uncertainty: ± 2.000%
THCO potency analysis does not designate quantitative specificity of Δ-8-THCO and Δ-9-THCO isomers

Amended report released to reflect change in sample identification.



New Bloom Labs
6121 Heritage Park Drive, A500
Chattanooga, TN 37416
(844) 837-8223
TN DEA#: RN0563975

Ashley N Phillips
Ashley N. Phillips, M. Sc
Laboratory Director

Powered by reLIMS
info@relims.com



HEMP. STORE
 CAPITALHEMPL
 LC@GMAIL.COM

Sample 564-082324-541

Blueberry Pie sm

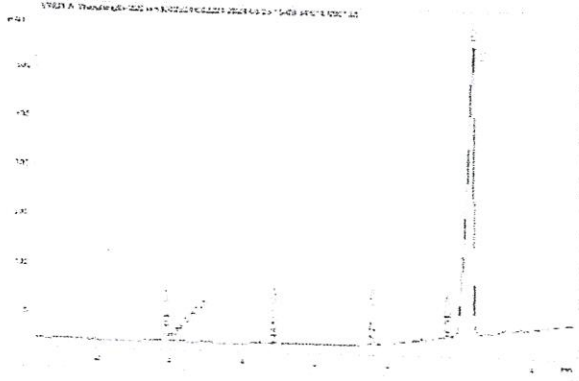
T2

Sample Submitted: 08-23-2024; Report Date: 08-30-2024

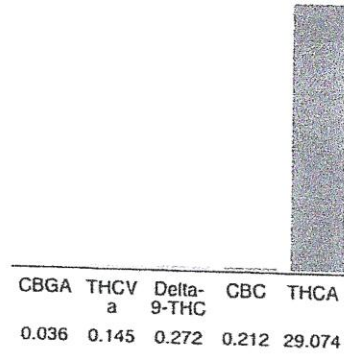
T2

Plant Material

Chromatogram



Cannabinoid Profile



Cannabinoid Profile by HPLC

0.27%
Delta-9-THC

0.00%
CBD

29.74%
Total Cannabinoids

Cannabinoid	% wt	mg/g
CBGA	0.036	0.36
THCVa	0.145	1.45
Delta-9-THC	0.272	2.72
CBC	0.212	2.12
THCA	29.07	290.74
Total Cannabinoids	29.74	297.4
Calculated Total THC	25.77	257.70
Calculated CBD Yield	0.00	0.00

Calculated Total THC = Delta-9-THC + 0.877 * THCA
 Calculated Maximum CBD Yield = CBD + 0.877 * CBDA

Marin Analytics, LLC
 250 Bel Marin Keys Blvd, Suite D4
 Novato, CA 94949

833-321-TEST / info@marinanalytics.com

Mike Clemmons
 Lab Manager

This sample has been tested by Marin Analytics, LLC using valid testing methodologies and a quality system. Values reported relate only to the sample tested. Marin Analytics, LLC makes no claims as to the efficacy, safety, or other risks associated with any detected or non-detected levels of any compounds reported herein. This Certificate shall not be reproduced except in full without the written approval of Marin Analytics, LLC. Copyright 2023 Marin Analytics, LLC All Rights Reserved.

KIWI KUSH



Certificate of Analysis

Informational Use Only - Not For Regulatory Use

Powered by Confident LIMS
1 of 3

**KMS AG
CONSULTING**
33972 Texas St
Albany, OR 97321

Sample: 3B.2408.2418

Strain: Kiwi Kush OG
Batch#: ; Batch Size: g
Sample Received: 08/12/2024; Report Created: 08/13/2024

Lic. #

Harvest/Production Date:

Kiwi Kush OG
Plant: Flower - Cured
Harvest Process Lot: ; METRC Batch: ; METRC Sample:



	12.90% Total THC	<LOQ Total CBD
--	----------------------------	-----------------------------

Cannabinoids

240812A

Analyte	LOQ	Concentration %	Concentration mg/g
THCa	0.15	14.52	145.2
Δ9-THC	0.15	0.17	1.7
Δ8-THC	0.15	<LOQ	<LOQ
CBDa	0.15	<LOQ	<LOQ
CBD	0.15	<LOQ	<LOQ
CBN	0.15	<LOQ	<LOQ
CBGa	0.15	0.95	9.5
CBG	0.15	<LOQ	<LOQ
CBC	0.15	<LOQ	<LOQ
Total		15.64	156.4

Method: Cannabinoids by UPLC-UV (SOP-T-016 Rev 7.0)
Total THC = THCa * 0.877 + Δ9-THC
Total CBD = CBDa * 0.877 + CBD

LOQ - Limit of Quantitation. The reported result is based on a sample weight and moisture content (as applicable) for that sample. Unless otherwise stated all quality control samples performed within specifications established by the Laboratory. CBG, CBGa, CBN, and CBC are not ORELAP accredited assays and do not comply with 3B Analytical's quality systems

Pass	Not Tested
-------------	-------------------