



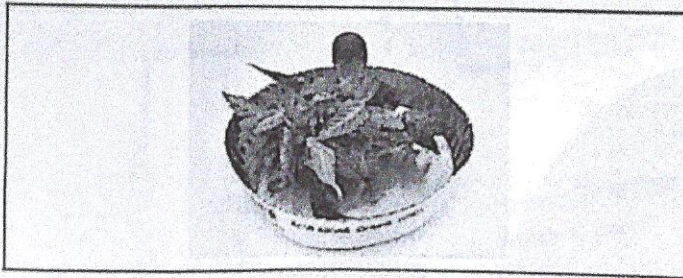
## GREEN BUD ACRES LLC

Sample: 10-05-2023-39586

Sample Received: 10/05/2023;

Report Created: 10/23/2023; Expires: 10/05/2024

Chem Cake  
Plant, Flower - Uncured



19.231 % Total THC	0.107 % Δ-9 THC
22.285 % Total Cannabinoids	<LOQ % Total CBD

### Cannabinoids

(Testing Method: HPLC, CON-P-3000)  
Date Tested: 10/05/2023

Complete

Analyte	LOD	LOQ	Mass	Mass	
	%	%	%	mg/g	
Δ-8-Tetrahydrocannabinol (Δ-8-THC)	0.0448	0.0673	ND	ND	
Δ-9-Tetrahydrocannabinol (Δ-9-THC)	0.0448	0.0673	0.107	1.067	
Δ-9-Tetrahydrocannabinolic Acid (THCA-A)	0.0448	0.0673	21.806	218.063	█
Δ-9-Tetrahydrocannabinophenol (Δ-9-THCP)	0.0448	0.0673	ND	ND	
Δ-9-Tetrahydrocannabivarin (Δ-9-THCV)	0.0448	0.0673	ND	ND	
Δ-9-Tetrahydrocannabivarinic Acid (Δ-9-THCVA)	0.0233	0.0673	<LOQ	<LOQ	
R-Δ-10-Tetrahydrocannabinol (R-Δ-10-THC)	0.0448	0.0673	ND	ND	
S-Δ-10-Tetrahydrocannabinol (S-Δ-10-THC)	0.0448	0.0673	ND	ND	
9R-Hexahydrocannabinol (9R-HHC)	0.0448	0.0673	ND	ND	
9S-Hexahydrocannabinol (9S-HHC)	0.0448	0.0673	ND	ND	
Tetrahydrocannabinol Acetate (THCO)	0.0448	0.0673	ND	ND	
Cannabidiol (CBD)	0.0448	0.0673	ND	ND	
Cannabidiolic Acid (CBDA)	0.0233	0.0673	<LOQ	<LOQ	
Cannabigerol (CBG)	0.0233	0.0673	<LOQ	<LOQ	
Cannabigerolic Acid (CBGA)	0.0448	0.0673	0.287	2.870	
Cannabinol (CBN)	0.0448	0.0673	ND	ND	
Cannabinolic Acid (CBNA)	0.0448	0.0673	ND	ND	
Cannabichromene (CBC)	0.0448	0.0673	ND	ND	
Cannabichromenic Acid (CBCA)	0.0448	0.0673	0.085	0.852	
<b>Total</b>			<b>22.285</b>	<b>222.852</b>	

Total THC = THCA \* 0.877 + Δ9-THC; Total CBD = CBDA \* 0.877 + CBD; LOQ = Limit of Quantitation; ND = Not Detected.

Total THC Measurement of Uncertainty: ± 0.050%  
Total CBD Measurement of Uncertainty: ± 2.000%  
THCO potency analysis does not designate quantitative specificity of Δ-8-THCO and Δ-9-THCO isomers

Amended report issued to reflect change in sample identification.



New Bloom Labs  
6121 Heritage Park Drive, A500  
Chattanooga, TN 37416  
(844) 837-8223  
TN DEA#: RN0563975  
ANAB Testing Laboratory (AT-2068); ISO/IEC  
17025:2017

*Natalie Siracusa*  
Natalie Siracusa  
Laboratory Director

Powered by  
reLIMS  
info@rellims.com

All analyses were conducted at 6121 Heritage Park Dr, Suite A500 Chattanooga, TN 37416. Results published on this certificate relate only to the items tested. Items are tested as received. New Bloom Labs makes no claims as to the efficacy, safety, or other risks associated with any detected or non-detected level of any compounds reported herein. This Certificate shall not be reproduced except in full, without the written approval of New Bloom Labs.



GREEN BUD ACRES LLC

Sample 656-092023-009

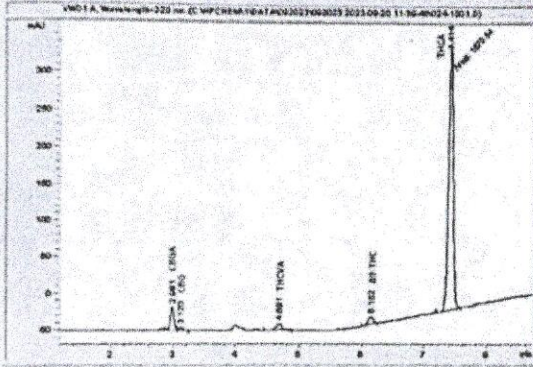
Jack Herer

Sample Submitted: 09-20-2023; Report Date: 09-26-2023

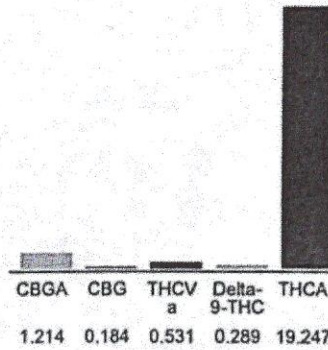
**Jack Herer**

Plant Material: Flower

Chromatogram



Cannabinoid Profile



Cannabinoid Profile by HPLC

**0.29%**  
Delta-9-THC

**0.00%**  
CBD

**21.47%**  
Total Cannabinoids

Cannabinoid	% wt	mg/g
CBGA	1.214	12.14
CBG	0.184	1.84
THCVa	0.531	5.31
Delta-9-THC	0.289	2.89
THCA	19.25	192.47
<b>Total Cannabinoids</b>	<b>21.47</b>	<b>214.7</b>
<b>Calculated Total THC</b>	<b>17.17</b>	<b>171.69</b>
<b>Calculated CBD Yield</b>	<b>0.00</b>	<b>0.00</b>

Calculated Total THC = Delta-9-THC + 0.877 \* THCA  
Calculated Maximum CBD Yield = CBD + 0.877 \* CBDA

**Marin Analytics, LLC**  
250 Bel Marin Keys Blvd, Suite D4  
Novato, CA 94949

833-321-TEST / info@marinanalytics.com

*Sara Biancalana*

Sara Biancalana  
Chief Scientist

This sample has been tested by Marin Analytics, LLC using valid testing methodologies and a quality system. Values reported relate only to the sample tested. Marin Analytics, LLC makes no claims as to the efficacy, safety, or other risks associated with any detected or non-detected levels of any compounds reported herein. This Certificate shall not be reproduced except in full without the written approval of Marin Analytics, LLC. Copyright 2023 Marin Analytics, LLC All Rights Reserved.



**Northern Lights**

**GREEN BUD ACRES LLC**

Batch ID or Lot Number: co722 - b13	Test: Dry Weight Potency	Reported: 09Jul2024	USDA License: NA
Matrix: Plant	Test ID: T000285920	Started: 08Jul2024	Sampler ID: NA
	Method(s): TM14 (HPLC-DAD) \ TM21 (Karl Fischer)	Received: 08Jul2024	Status: NA

Cannabinoids	LOD (%)	LOQ (%)	Dry Weight Result (%)	MU Range (%)	Notes
Cannabichromene (CBC)	0.018	0.056	ND	ND	Dried Sample Moisture Content = 73.87% Measurement Uncertainty = 7.73% Results generated using a non-validated, non-compliant method.
Cannabichromenic Acid (CBCA)	0.016	0.051	0.360	0.332 - 0.388	
Cannabidiol (CBD)	0.047	0.176	ND	ND	
Cannabidiolic Acid (CBDA)	0.048	0.180	ND	ND	
Cannabidivarin (CBDV)	0.011	0.042	ND	ND	
Cannabidivarinic Acid (CBDVA)	0.020	0.075	ND	ND	
Cannabigerol (CBG)	0.010	0.032	0.114	0.105 - 0.123	
Cannabigerolic Acid (CBGA)	0.042	0.132	0.597	0.551 - 0.643	
Cannabinol (CBN)	0.013	0.041	ND	ND	
Cannabinolic Acid (CBNA)	0.029	0.090	ND	ND	
Delta 8-Tetrahydrocannabinol (Delta 8-THC)	0.050	0.158	ND	ND	
Delta 9-Tetrahydrocannabinol (Delta 9-THC)	0.046	0.143	ND	ND	
Delta 9-Tetrahydrocannabinolic Acid (THCA-A)	0.041	0.127	18.743	17.294 - 20.192	
Tetrahydrocannabivarin (THCV)	0.009	0.029	ND	ND	
Tetrahydrocannabivarinic Acid (THCVA)	0.036	0.112	ND	ND	
<b>Total Cannabinoids</b>			<b>19.814</b>	<b>18.272 - 21.356</b>	
Total Potential THC			16.438	15.167 - 17.708	

**Final Approval**

*K Winterheimer*

Karen Winterheimer  
09Jul2024  
11:04:00 AM MDT

*Samantha Smith*

Sam Smith  
09Jul2024  
11:07:00 AM MDT



PREPARED BY / DATE

APPROVED BY / DATE

<https://results.botanacor.com/api/v1/coins/uuid/3df60454-3e2a-49f3-819e-b17c06448b43>

**Definitions**

% = % (w/w) = Percent (weight of analyte / weight of product). ND = None Detected (defined by dynamic range of the method).  
Percentage of Delta 9-THC on a dry weight basis = The percentage of Delta 9-THC by weight in cannabis item after excluding all moisture from the item. Total Potential Delta 9-THC or CBD is calculated to take into account the loss of a carboxyl group during decarboxylation step, using the following formulas: Total Potential Delta 9-THC = Delta 9-THC + (Delta 9-THCa \* 0.877); and Total CBD = CBD + (CBDa \* 0.877). Fail equates to a concentration level of Delta 9-THC, on a dry weight basis, higher than 0.3 percent + or - the measurement uncertainty.

Testing results are based solely upon the sample submitted to SC Laboratories, Inc., in the condition it was received. SC Laboratories, Inc., warrants that all analytical work is conducted professionally in accordance with all applicable standard laboratory practices using validated methods. Data was generated using an unbroken chain of comparison to NIST traceable Reference Standards and Certified Reference Materials. This report may not be reproduced, except in full, without the written approval of SC Laboratories, Inc. (SC Labs) 17025.2017 A2LA Cert # 4329102 Chemical 4329101 Biological



33604843e2a49f3919eb17c06448b43.1



GREEN BUD ACRES LLC

Sample 596-021624-059

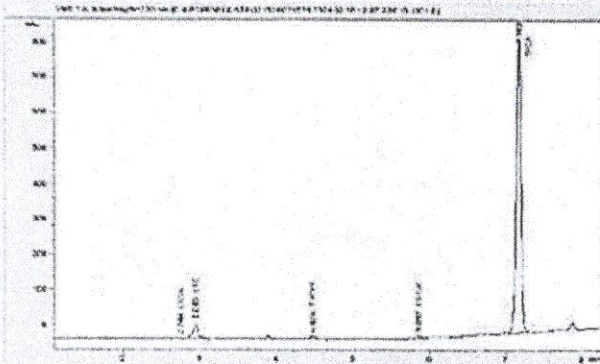
Ice Cream Cake

Sample Submitted: 02-16-2024; Report Date: 02-23-2024

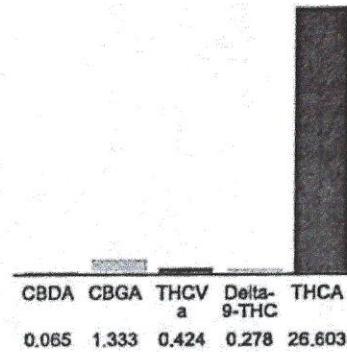
**Ice Cream Cake**

Plant Material: Hemp Flower

**Chromatogram**



**Cannabinoid Profile**



**Cannabinoid Profile by HPLC**

**0.28%**  
Delta-9-THC

**0.00%**  
CBD

**28.70%**  
Total Cannabinoids

Cannabinoid	% wt	mg/g
CBDA	0.065	0.65
CBGA	1.333	13.33
THCVa	0.424	4.24
Delta-9-THC	0.278	2.78
THCA	26.6	266.03
<b>Total Cannabinoids</b>	<b>28.70</b>	<b>287.0</b>
<b>Calculated Total THC</b>	<b>23.61</b>	<b>236.09</b>
<b>Calculated CBD Yield</b>	<b>0.06</b>	<b>0.57</b>

Calculated Total THC = Delta-9-THC + 0.877 \* THCA  
 Calculated Maximum CBD Yield = CBD + 0.877 \* CBDA

**Marin Analytics, LLC**  
 250 Bel Marin Keys Blvd, Suite D4  
 Novato, CA 94949

833-321-TEST / info@marinanalytics.com

**Mike Clemmons**  
 Lab Manager

This sample has been tested by Marin Analytics, LLC using valid testing methodologies and a quality system. Values reported relate only to the sample tested. Marin Analytics, LLC makes no claims as to the efficacy, safety, or other risks associated with any detected or non-detected levels of any compounds reported herein. This Certificate shall not be reproduced except in full without the written approval of Marin Analytics, LLC. Copyright 2023 Marin Analytics, LLC All Rights Reserved.



**GREEN BUD ACRES LLC**

**Sample 616-042324-294**

**Truffle Cake THCA Flower**

Batch/Lot # TC46998

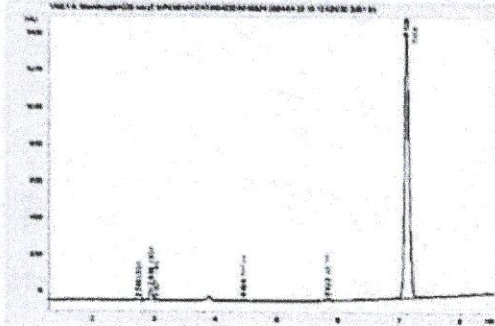
Sample Submitted: 04-23-2024; Report Date: 04-29-2024

**Truffle Cake THCA Flower**

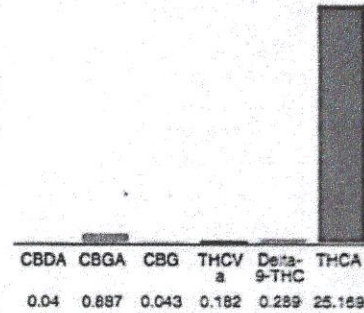
**Batch/Lot # TC46998**

Plant Material: Hemp Flower

**Chromatogram**



**Cannabinoid Profile**



**Cannabinoid Profile by HPLC**

**0.29%**  
Delta-9-THC

**0.00%**  
CBD

**26.61%**  
Total Cannabinoids

Cannabinoid	% wt	mg/g
CBDA	0.04	0.4
CBGA	0.887	8.87
CBG	0.043	0.43
THCVa	0.182	1.82
Delta-9-THC	0.289	2.89
THCA	25.17	251.69
<b>Total Cannabinoids</b>	<b>26.61</b>	<b>266.1</b>
<b>Calculated Total THC</b>	<b>22.36</b>	<b>223.62</b>
<b>Calculated CBD Yield</b>	<b>0.04</b>	<b>0.35</b>
Calculated Total THC = Delta-9-THC + 0.877 * THCA		
Calculated Maximum CBD Yield = CBD + 0.877 * CBDA		

**Marin Analytics, LLC**  
 250 Bel Marin Keys Blvd, Suite D4  
 Novato, CA 94949

833-321-TEST / info@marinanalytics.com

**Mike Clemmons**  
 Lab Manager

This sample has been tested by Marin Analytics, LLC using valid testing methodologies and a quality system. Values reported relate only to the sample tested. Marin Analytics, LLC makes no claims as to the efficacy, safety, or other risks associated with any detected or non-detected levels of any compounds reported herein. This Certificate shall not be reproduced except in full without the written approval of Marin Analytics, LLC. Copyright 2023 Marin Analytics, LLC All Rights Reserved.



# Certificate of Analysis

Provided for quality control or research and development purposes.

Powered by Confident LIMS



GREEN BUD ACRES LLC Sample: 2506CH0441.1884

Strain: Purple Punch

Batch#: ; Batch Size: g

Sample Received: 06/25/2025; Report Created: 06/27/2025

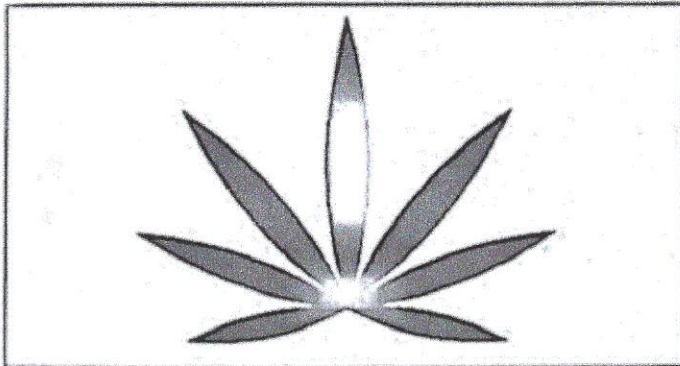
Harvest/Production Date:

Sampling: Random; Environment: Room Temp

## THCA Purple Punch

Concentrates & Extracts, Crumble

Harvest Process Lot: ; METRC Batch: ; METRC Sample:



Analyte	Analyte
THCa	CBDV
$\Delta^9$ -THC	CBN
$\Delta^8$ -THC	CBGa
THCV	CBG
CBDa	CBC
CBD	

## Cannabinoids

1943 HPLC4 20250626-1

06/26/2025 | METRC THC RPD Status: Tested ; METRC CBD RPD Status: Tested ; METRC  $\Delta^8$ -THC RPD Status: Tested

<p><b>0.06%</b></p> <p><math>\Delta^9</math>-THC/serving</p>	<p><b>0.21%</b></p> <p>Total CBD** (Calculated Decarboxylated Potential)</p>
--	--

Analyte	LOQ	Mass	%
	mg/g	mg/g	%
THCa	1.5	920.7	92.6
$\Delta^9$ -THC	1.5	0.6	0.06
$\Delta^8$ -THC	1.5	<LOQ	<LOQ
THCV	1.5	<LOQ	<LOQ
CBDa	1.5	2.4	0.24
CBD	1.5	<LOQ	<LOQ
CBDV	1.5	<LOQ	<LOQ
CBN	1.5	<LOQ	<LOQ
CBGa	1.5	2.7	0.27
CBG	1.5	<LOQ	<LOQ
CBC	1.5	<LOQ	<LOQ
<b>Total</b>		<b>926.5</b>	<b>92.65</b>

<p><b>92.65%</b></p> <p>Total Cannabinoids Analyzed</p>
---



*Patrick Trujillo*

Patrick Trujillo  
Laboratory Director

Results reported relate only to the product tested. ChemHistory makes no claims as to the consumer safety or other risks associated with any detected or non-detected levels of any pesticides or other contaminants. This Certificate shall not be reproduced except in full, without the written approval of ChemHistory. QC Blank results of 0 are <LOQ. ORELAP accredited ID#4057, ISO 17025 5487.D1, and OLCC Licensed Cannabis Testing Laboratory #010-1002015CASE.

Scanned with

Scanned with



# Certificate of Analysis

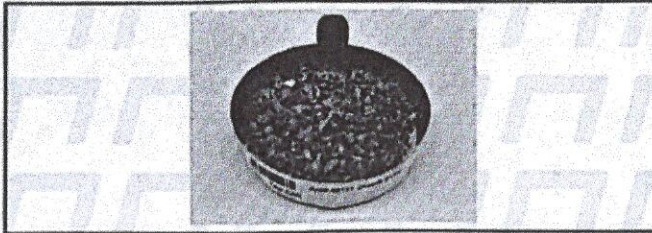


Sample: 04-22-2024-49137W7021

Sample Received: 04/22/2024;

Report Created: 08/29/2024; Expires: 04/23/2025

Han Solo  
Plant



23.441 %  
Total THC

0.241 %  
Δ-9 THC

27.860 %  
Total Cannabinoids

<LOQ %  
Total CBD

## Cannabinoid

Complete

(Testing Method: HPLC, CON-P-3000)  
Date Tested: 04/22/2024

Analyte	LOD %	LOQ %	Mass %	Mass mg/g
Δ-8-Tetrahydrocannabinol (Δ-8-THC)	0.0500	0.0750	ND	ND
Δ-9-Tetrahydrocannabinol (Δ-9-THC)	0.0500	0.0750	0.241	2.410
Δ-9-Tetrahydrocannabinolic Acid (THICA-A)	0.0500	0.0750	26.454	264.540
Δ-9-Tetrahydrocannabinophenol (Δ-9-THCP)	0.0500	0.0750	ND	ND
Δ-9-Tetrahydrocannabivarin (Δ-9-THCV)	0.0500	0.0750	ND	ND
Δ-9-Tetrahydrocannabivarinic Acid (Δ-9-THCVA)	0.0500	0.0750	0.189	1.890
R-Δ-10-Tetrahydrocannabinol (R-Δ-10-THC)	0.0500	0.0750	ND	ND
S-Δ-10-Tetrahydrocannabinol (S-Δ-10-THC)	0.0500	0.0750	ND	ND
9R-Hexahydrocannabinol (9R-HHC)	0.0500	0.0750	ND	ND
9S-Hexahydrocannabinol (9S-HHC)	0.0500	0.0750	ND	ND
Tetrahydrocannabinol Acetate (THCO)	0.0500	0.0750	ND	ND
Cannabidivarin (CBDV)	0.0500	0.0750	ND	ND
Cannabidivarinic Acid (CBDVA)	0.0500	0.0750	ND	ND
Cannabidiol (CBD)	0.0500	0.0750	ND	ND
Cannabidiolic Acid (CBDA)	0.0320	0.0750	<LOQ	<LOQ
Cannabigerol (CBG)	0.0320	0.0750	<LOQ	<LOQ
Cannabigerolic Acid (CBGA)	0.0500	0.0750	0.780	7.800
Cannabinol (CBN)	0.0500	0.0750	ND	ND
Cannabinolic Acid (CBNA)	0.0500	0.0750	ND	ND
Cannabichromene (CBC)	0.0500	0.0750	ND	ND
Cannabichromenic Acid (CBCA)	0.0500	0.0750	0.196	1.960
Total			27.860	278.600

Total THC = THCa \* 0.877 + Δ9-THC; Total CBD = CBDA \* 0.877 + CBD; LOQ = Limit of Quantitation; ND = Not Detected.

Total THC Measurement of Uncertainty: ± 0.040%  
Total CBD Measurement of Uncertainty: ± 2.000%  
THCO potency analysis does not designate quantitative specificity of Δ-8-THCO and Δ-9-THCO isomers

Amended report released to reflect change in sample identification.



New Bloom Labs  
6121 Heritage Park Drive, A500  
Chattanooga, TN 37416  
(844) 837-8223  
TN DEA#: RN0563975

*Ashley N Phillips*  
Ashley N. Phillips, M. Sc  
Laboratory Director

Powered by reLIMS  
info@relims.com

All analyses were conducted at 6121 Heritage Park Dr, Suite A500 Chattanooga, TN 37416. Results published on this certificate relate only to the items tested. Items are tested as received. New Bloom Labs makes no claims as to the efficacy, safety, or other risks associated with any detected or non-detected level of any compounds reported herein. This Certificate shall not be reproduced except in full, without the written approval of New Bloom Labs.