



Blueberry Pie sm



Sample 564-082324-541

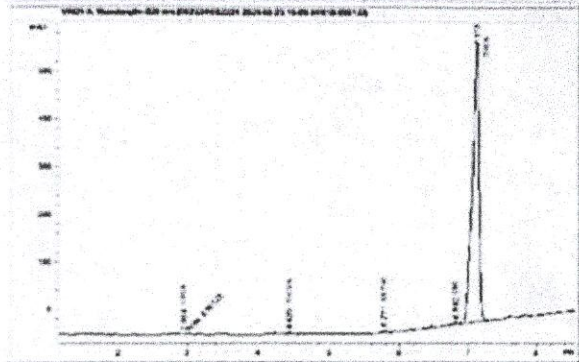
T2

Sample Submitted: 08-23-2024; Report Date: 08-30-2024

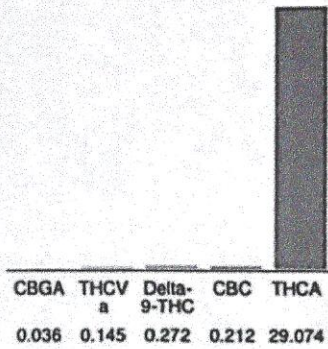
T2

Plant Material

Chromatogram



Cannabinoid Profile



Cannabinoid Profile by HPLC

**0.27%**  
Delta-9-THC

**0.00%**  
CBD

**29.74%**  
Total Cannabinoids

Cannabinoid	% wt	mg/g
CBGA	0.036	0.36
THCVa	0.145	1.45
Delta-9-THC	0.272	2.72
CBC	0.212	2.12
THCA	29.07	290.74
<b>Total Cannabinoids</b>	<b>29.74</b>	<b>297.4</b>
<b>Calculated Total THC</b>	<b>25.77</b>	<b>257.70</b>
<b>Calculated CBD Yield</b>	<b>0.00</b>	<b>0.00</b>

Calculated Total THC = Delta-9-THC + 0.877 \* THCA  
 Calculated Maximum CBD Yield = CBD + 0.877 \* CBDA

**Marin Analytics, LLC**  
 250 Bel Marin Keys Blvd, Suite D4  
 Novato, CA 94949

833-321-TEST / info@marinanalytics.com

**Mike Clemmons**  
 Lab Manager

This sample has been tested by Marin Analytics, LLC using valid testing methodologies and a quality system. Values reported relate only to the sample tested. Marin Analytics, LLC makes no claims as to the efficacy, safety, or other risks associated with any detected or non-detected levels of any compounds reported herein. This Certificate shall not be reproduced except in full without the written approval of Marin Analytics, LLC. Copyright 2023 Marin Analytics, LLC All Rights Reserved.



## Certificate of Analysis Informational Use Only - Not For Regulatory Use

Powered by Confident LIMS  
1 of 3



Sample: 3B.2408.2418

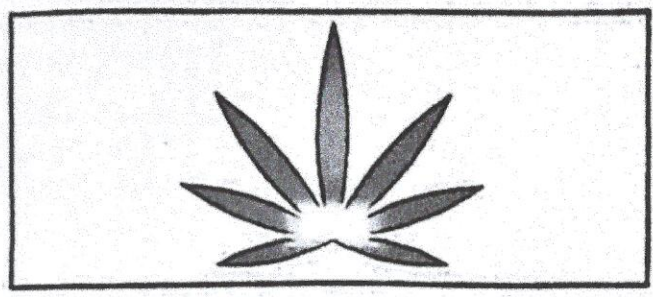
Strain: Kiwi Kush OG  
Batch#: ; Batch Size: g

Sample Received: 08/12/2024; Report Created: 08/13/2024

Harvest/Production Date:

# GREEN BUD ACRES LLC

Kiwi Kush OG  
Plant Flower - Cured  
Harvest Process Lot: ; METRC Batch: ; METRC Sample:



**12.90%**  
Total THC

**<LOQ**  
Total CBD

### Cannabinoids 240812A

Analyte	LOQ	Concentration	Concentration
	%	%	mg/g
THCa	0.15	14.52	145.2
Δ9-THC	0.15	0.17	1.7
Δ8-THC	0.15	<LOQ	<LOQ
CBDa	0.15	<LOQ	<LOQ
CBD	0.15	<LOQ	<LOQ
CBN	0.15	<LOQ	<LOQ
CBGa	0.15	0.95	9.5
CBG	0.15	<LOQ	<LOQ
CBC	0.15	<LOQ	<LOQ
<b>Total</b>		<b>15.64</b>	<b>156.4</b>

Method: Cannabinoids by UPLC-UV (SOP-T-016 Rev 7.0)

Total THC = THCa \* 0.877 + Δ9-THC

Total CBD = CBDa \* 0.877 + CBD

LOQ = Limit of Quantitation. The reported result is based on a sample weight and moisture content (as applicable) for that sample. Unless otherwise stated all quality control samples performed within specifications established by the Laboratory. CBG, CBGa, CBN, and CBC are not OREI AP accredited assays and do not comply with 3B Analytical's quality systems

**Pass**  
Moisture

**Not Tested**  
Water Activity

ANALYTICAL  
8700 SW Barber Ct.  
Portland, OR  
(503) 954-3972  
www.3banalytical.com  
Lic# 010 100536507C4; OREI AP# 4087

*Meghan Brock*  
Meghan Brock  
Quality Manager

Confident LIMS  
All Rights Reserved  
conf.support@confidentlms.com  
(866) 506-5866  
www.confidentlms.com



REPORT PREPARED FOR:

**GREEN BUD ACRES LLC**

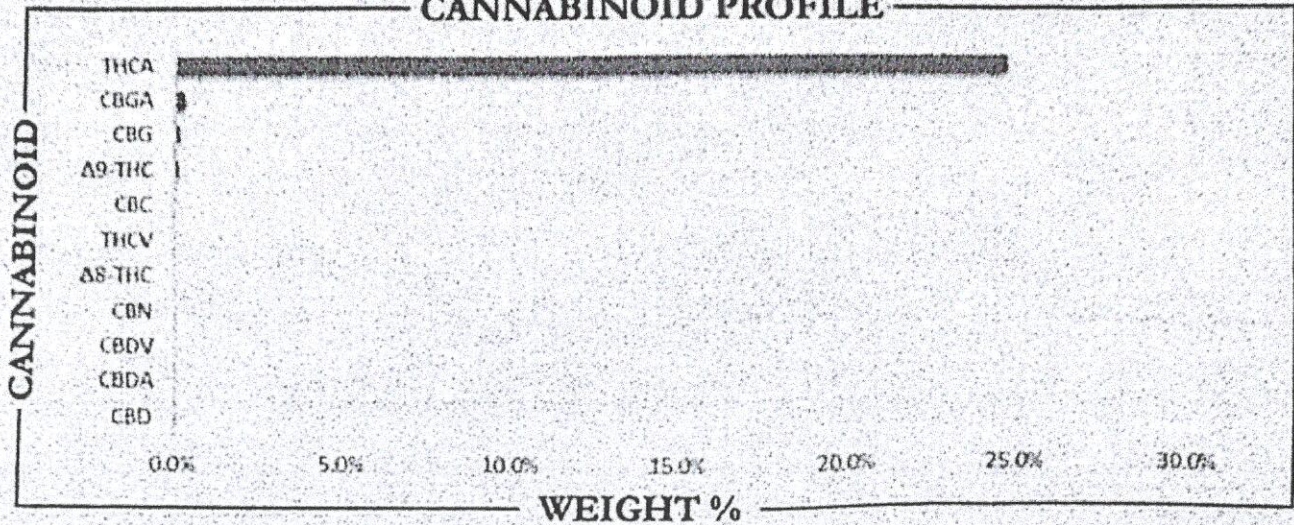
PROJECT# 24017504  
 LAB ID 54040783  
 REPORT DATE 9/19/2024



SAMPLE NAME: Gorilla Skunk  
 DATE RECEIVED: 9/18/2024

THCA	TOTAL CBD	TOTAL CANNABINOIDS
24.73%	ND	25.39%

**CANNABINOID PROFILE**



CANNABINOID	WEIGHT %	MG/G
CBC	0.05	0.52
CBD	ND	ND
CBDA	ND	ND
CBDV	ND	ND
CBG	0.18	1.84
CBGA	0.30	3.05
CBN	ND	ND
Δ8-THC	ND	ND
Δ9-THC	0.12	1.20
THCA	24.73	247.3
THCV	ND	ND
Total CBD	ND	ND
Total CBG	0.45	4.51
Total THC	21.81	218.1

Analyse Method: 310/PT145  
 By: JHL/VERD  
 Total THC = 91877 x 718.15 = 65731  
 Total CBD = 91877 x 4.9411 = 4540  
 ND = Not Detected

Prepared By: EBB Prepared Date: 9/18/2024  
 Analyzed By: EBB Date Analyzed: 9/18/2024  
 Sample Name: SEPHIRA POT



APPROVED BY:  
**JUSTIN HALL**  
 LAB DIRECTOR

*J. Hill*  
 SIGNATURE

9/19/2024  
 SIGNED ON

GREEN BUD ACRES LLC



Sample 564-021905-829

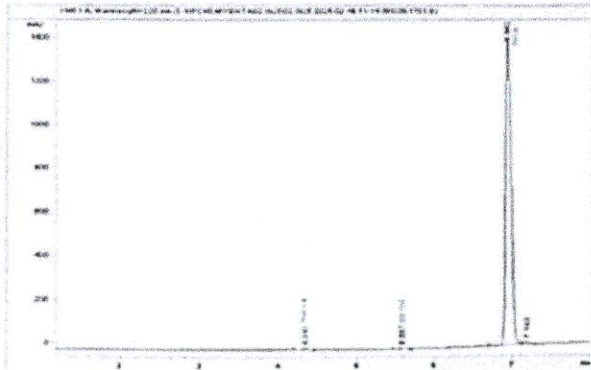
T4

Sample Submitted: 02-19-2205; Report Date: 02-25-2025

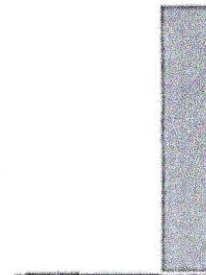
T4 HASH

Extract / Concentrate

Chromatogram



Cannabinoid Profile



THCV	Delta-9-THC	THCA
0.398	0.288	78.655

Cannabinoid Profile by HPLC

0.29%  
Delta-9-THC

0.00%  
CBD

79.34%  
Total Cannabinoids

Cannabinoid	% wt	mg/g
THCVa	0.398	3.98
Delta-9-THC	0.288	2.88
THCA	78.66	786.55
<b>Total Cannabinoids</b>	<b>79.34</b>	<b>793.4</b>
<b>Calculated Total THC</b>	<b>69.27</b>	<b>692.68</b>
<b>Calculated CBD Yield</b>	<b>0.00</b>	<b>0.00</b>

Calculated Total THC = Delta-9-THC + 0.877 \* THCA  
 Calculated Maximum CBD Yield = CBD + 0.877 \* CBDA

Marin Analytics, LLC  
 250 Bel Marin Keys Blvd, Suite D4  
 Novato, CA 94949

833-321-TEST / info@marinanalytics.com

Mike Clemmons  
 Lab Manager

This sample has been tested by Marin Analytics, LLC using valid testing methodologies and a quality system. Values reported relate only to the sample tested. Marin Analytics, LLC makes no claims as to the efficacy, safety, or other risks associated with any detected or non-detected levels of any compounds reported herein. This Certificate shall not be reproduced except in full without the written approval of Marin Analytics, LLC. Copyright 2023 Marin Analytics, LLC All Rights Reserved.

REPORT PREPARED FOR:

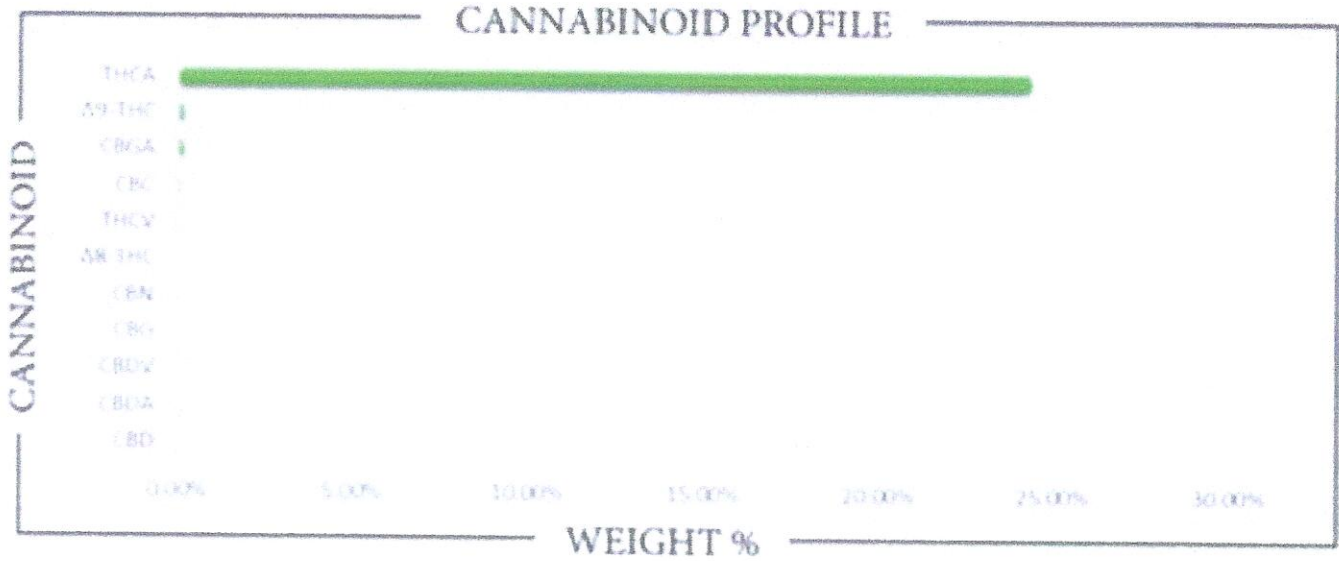
**GREEN BUD ACRES LLC**

PROJECT# 25009958  
 LAB ID 55024921  
 RECEIVED DATE 5/12/2025  
 REPORT DATE 5/14/2025

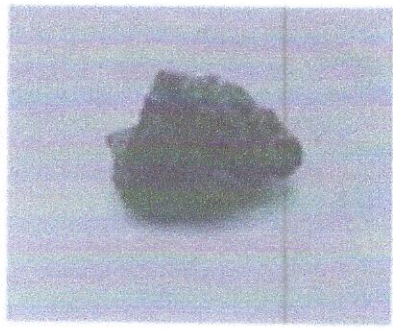


SAMPLE NAME **Zkittlez**

THCA	TOTAL CBD	TOTAL CANNABINOIDS
24.353 %	ND	24.806 %



CANNABINOID	WEIGHT %	MG/G
CBC	0.0697	0.697
CBD	ND	ND
CBDA	ND	ND
CBDV	ND	ND
CBG	ND	ND
CBGA	0.1899	1.899
CBN	ND	ND
Δ8-THC	ND	ND
Δ9-THC	0.1929	1.929
THCA	24.353	243.53
THCV	ND	ND
Total CBD	ND	ND
Total CBG	0.1665	1.665
Total THC	21.550	215.50



Analysis Method: TP-VUE-01  
 B-9954-V-021  
 Scale 1 (g) = 0.0011 ± 0.0001 g, 0.01 g  
 Scale 2 (mg) = 0.0011 ± 0.0001 mg, 0.01 mg  
 Scale 3 (mg) = 0.0011 ± 0.0001 mg, 0.01 mg  
 ND = Not Detected

Prepared By: TD  
 Prep Date: 5/13/2025  
 Batch ID: MXT1325A-1031

Analyzed By: TD  
 Analysis Date: 5/13/2025



APPROVED BY:  
**JUSTIN HALL**  
 LAB DIRECTOR

*J. Hall*  
 SIGNATURE

5/14/2025  
 SIGNED ON

# Certificate of Analysis

For R&D Use Only - Not a California Compliance Certificate

## Purple Urkle



## GREEN BUD ACRES



Total CBD	ND
Total THC	27.48 %
Total Cannabinoids	31.30 %

Sample Name:  
Purple Urkle

Matrix:  
Plant

Unit Mass:  
1 g per unit

Sample ID:  
6741223 8

Date Received:  
12/23/2024

*Marie*

Approved By:  
Marie True, M S  
Laboratory Manager

This certificate of analysis is responsible for the tested sample only and is for research and development (R&D) use only. This certificate of analysis shall not be reproduced, except in its entirety, without the written approval of FESA Labs. FESA Labs shall not be liable for any damage that may result from the data contained herein in any way. FESA Labs makes no claim to the efficacy, safety or other risks associated with any detected or non-detected amounts of any substances reported herein. If there are any questions with this report please email [info@fesalabs.com](mailto:info@fesalabs.com). This certificate of analysis is intended only for the use of the party to whom it is addressed and may contain information that is confidential or protected from disclosure under applicable law. If you have received this document in error, please immediately contact us.

References: limit of detection (LOD), limit of quantitation (LOQ), not detected (ND), not tested (NT)