

KIWI KUSH



Certificate of Analysis

Informational Use Only - Not For Regulatory Use

Powered by Confident LIMS
1 of 3

**KMS AG
CONSULTING**
33972 Texas St
Albany, OR 97321

Sample: 3B.2408.2418

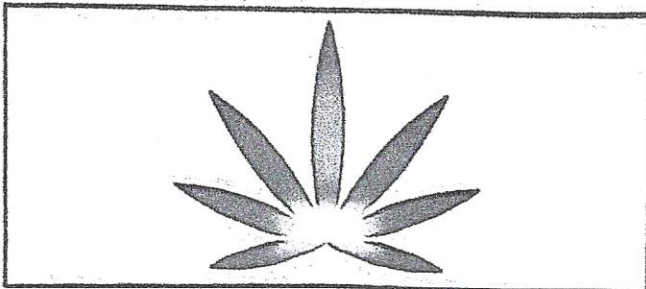
Strain: Kiwi Kush OG
Batch#: ; Batch Size: g

Sample Received: 08/12/2024; Report Created: 08/13/2024

Lic. #

Harvest/Production Date:

Kiwi Kush OG
Plant: Flower - Cured
Harvest Process Lot.: METRC Batch.: METRC Sample:



12.90%

Total THC

<LOQ

Total CBD

Cannabinoids

240812A

Analyte	LOQ	Concentration	Concentration
		%	mg/g
THCa	0.15	14.52	145.2
Δ9-THC	0.15	0.17	1.7
Δ8-THC	0.15	<LOQ	<LOQ
CBDa	0.15	<LOQ	<LOQ
CBD	0.15	<LOQ	<LOQ
CBN	0.15	<LOQ	<LOQ
CBGa	0.15	0.95	9.5
CBG	0.15	<LOQ	<LOQ
CBC	0.15	<LOQ	<LOQ
Total		15.64	156.4

Method: Cannabinoids by UPLC-UV (SOP-T-016 Rev 7.0)

Total THC = THCa * 0.877 + Δ9-THC

Total CBD = CBDa * 0.877 + CBD

LOQ = Limit of Quantitation. The reported result is based on a sample weight and moisture content (as applicable) for that sample. Unless otherwise stated all quality control samples performed within specifications established by the Laboratory. CBG, CBGa, CBN, and CBC are not ORELAP accredited assays and do not comply with 3B Analytical's quality systems

Pass

Not Tested

Certificate of Analysis

For R&D Use Only - Not a California Compliance Certificate.

Bubble Gum Runtz

Client:

Total CBD

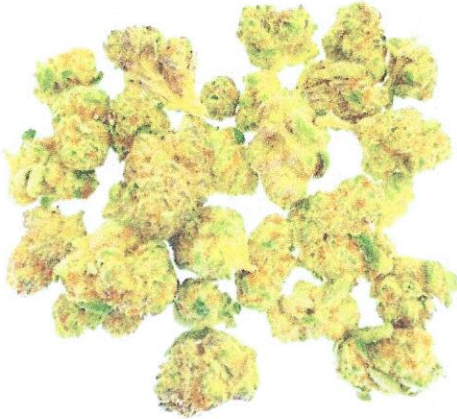
ND

Total THC

28.82 %

Total Cannabinoids

32.84 %



Sample Name:

Bubble Gum Runtz

Matrix:

Plant

Unit Mass:

1 g per unit

Sample ID:

46540717-5

Date Received:

7/17/2024



Approved By:

Marie True, M.S.

Laboratory Manager

This certificate of analysis is responsible for the tested sample only and is for research and development (R&D) use only. This certificate of analysis shall not be reproduced, except in its entirety, without the written approval of FESA Labs. FESA Labs shall not be liable for any damage that may result from the data contained herein in any way. FESA Labs makes no claim to the efficacy, safety or other risks associated with any detected or non-detected amounts of any substances reported herein. If there are any questions with this report please email info@fesalabs.com. This certificate of analysis is intended only for the use of the party to whom it is addressed and may contain information that is confidential or protected from disclosure under applicable law. If you have received this document in error, please immediately contact us.

References: limit of detection (LOD), limit of quantitation (LOQ), not detected (ND), not tested (NT)

Certificate of Analysis

For R&D Use Only - Not a California Compliance Certificate.

Client:

Cannabinoid Analysis

Complete

Analyte	LOD (%)	LOQ (%)	Mass (%)	Mass (mg/g)
CBDV	0.0035	0.011	ND	ND
CBD	0.0030	0.0090	ND	ND
CBG	0.0038	0.011	ND	ND
CBDA	0.0017	0.0052	ND	ND
CBN	0.00080	0.0024	ND	ND
Delta 9-THC	0.0022	0.0067	0.217	2.17
Delta 8-THC	0.0020	0.0059	ND	ND
CBC	0.00070	0.0021	ND	ND
THCA	0.0024	0.0073	32.619	326.19
Total CBD			ND	ND
Total THC			28.823	288.23
Total Cannabinoids			32.835	328.35

Date Tested: 7/17/2024

Total THC = THCa * 0.877 + d9-THC + d8-THC

Total CBD = CBDa * 0.877 + CBD

Method References:

Testing Location

Cannabinoid Profile (UNODC)

FESA Labs - Santa Ana, CA

Official Methods of Analysis, Method 2018.11.AOAC INTERNATIONAL (modified), Lukas Vaclavik, Frantisek Benes, Alex Krmela, Veronika Svobodova, Jana Hajsolva, and Katerina Mastovska, "Quantification of Cannabinoids in Cannabis Dried Plant Materials, Concentrates, and Oils Liquid Chromatography-Diode Array Detection Technique with Optional Mass Spectrometric Detection," First Action Method, Journal of AOAC International, Future Issue

United Nations Office on Drugs and Crime - Recommended methods for identification and analysis of cannabis and cannabis products

Testing Location:

FESA Labs

2002 S. Grand Ave., Suite A
Santa Ana, CA 92705
(714) 540-0172
www.fesalabs.com

KMS AG Consulting

KMS AG
CONSULTING

33972 Texas St
Alhambra, OR 97321

Sample 596-021624-059

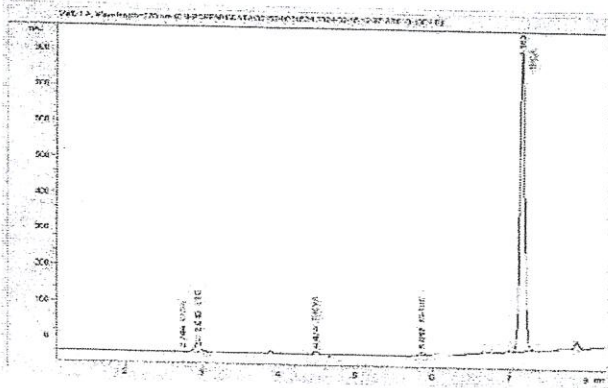
Ice Cream Cake

Sample Submitted: 02-16-2024; Report Date: 02-23-2024

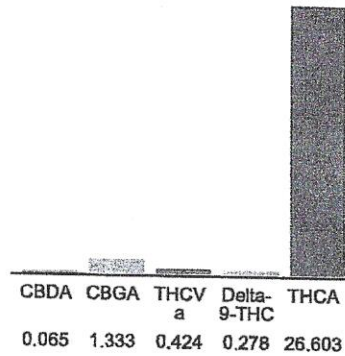
Ice Cream Cake

Plant Material: Hemp Flower

Chromatogram



Cannabinoid Profile



Cannabinoid Profile by HPLC

0.28%
Delta-9-THC

0.00%
CBD

28.70%
Total Cannabinoids

Cannabinoid	% wt	mg/g
CBDA	0.065	0.65
CBGA	1.333	13.33
THCVa	0.424	4.24
Delta-9-THC	0.278	2.78
THCA	26.6	266.03
Total Cannabinoids	28.70	287.0
Calculated Total THC	23.61	236.09
Calculated CBD Yield	0.06	0.57

Calculated Total THC = Delta-9-THC + 0.877 * THCA
 Calculated Maximum CBD Yield = CBD + 0.877 * CBDA

Marin Analytics, LLC
 250 Bel Marin Keys Blvd, Suite D4
 Novato, CA 94949

833-321-TEST / info@marinanalytics.com

Mike Clemmons
 Lab Manager

This sample has been tested by Marin Analytics, LLC using valid testing methodologies and a quality system. Values reported relate only to the sample tested. Marin Analytics, LLC makes no claims as to the efficacy, safety, or other risks associated with any detected or non-detected levels of any compounds reported herein. This Certificate shall not be reproduced except in full without the written approval of Marin Analytics, LLC. Copyright 2023 Marin Analytics, LLC All Rights Reserved.

REPORT PREPARED FOR:

KMS AG Consulting

PROJECT# 25002939

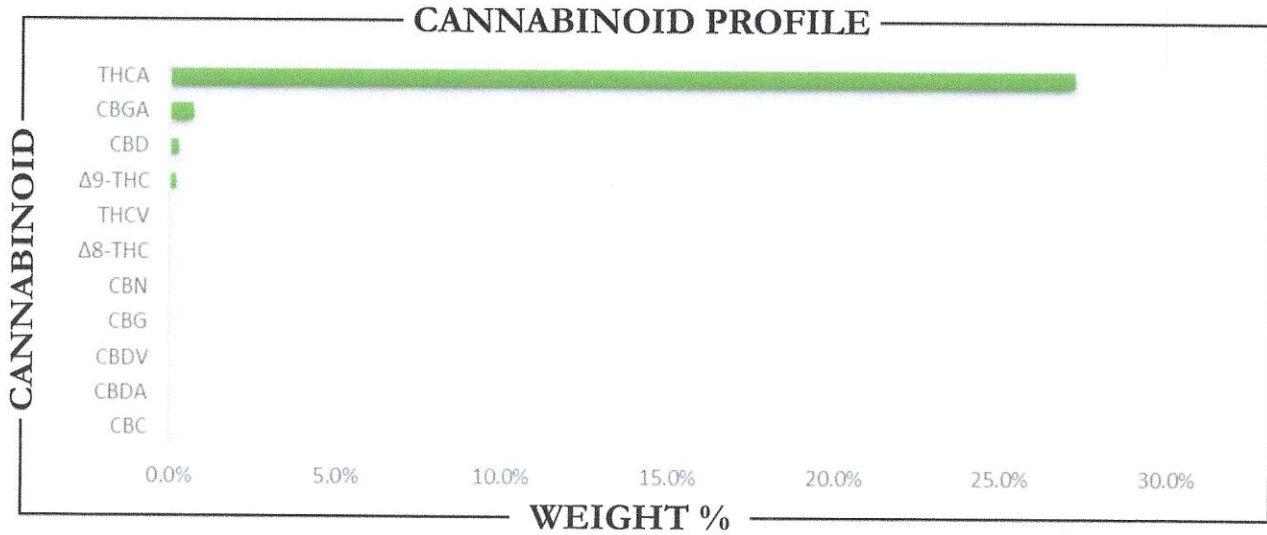
LAB ID 55006905

REPORT DATE 1/23/2025

SAMPLE NAME: Chem Cake Trim

DATE RECEIVED: 1/22/2025

THCA	TOTAL CBD	TOTAL CANNABINOIDS
27.19%	0.26%	28.31%



CANNABINOID	WEIGHT %	MG/G
CBC	ND	ND
CBD	0.26	2.56
CBDA	ND	ND
CBDV	ND	ND
CBG	ND	ND
CBGA	0.67	6.72
CBN	ND	ND
Δ8-THC	ND	ND
Δ9-THC	0.19	1.89
THCA	27.19	271.9
THCV	ND	ND
Total CBD	0.26	2.56
Total CBG	0.59	5.89
Total THC	24.03	240.3

Analysis Method: TP-POT-05
 By: HPLC-VWD
 Total THC = (0.877 x THCA) + Δ9-THC
 Total CBD = (0.877 x CBDA) + CBD
 Total CBG = (0.877 x CBGA) + CBG
 ND = Not Detected

Prepared By: TJS Prepared Date: 1/22/2025
 Analyzed By: TJS Date Analyzed: 1/22/2025
 Analysis Batch: JAN2225A-POT



APPROVED BY:
JUSTIN HALL
 LAB DIRECTOR


 SIGNATURE

1/23/2025
 SIGNED ON



HEMP. STORE
 CAPITALHEMPL
 LC@GMAIL.COM

Sample 564-082324-541

Blueberry Pie sm

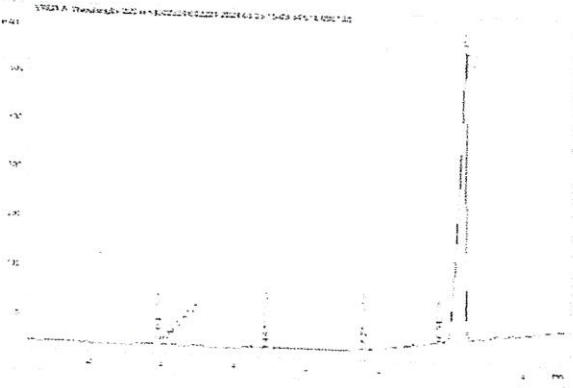
T2

Sample Submitted: 08-23-2024; Report Date: 08-30-2024

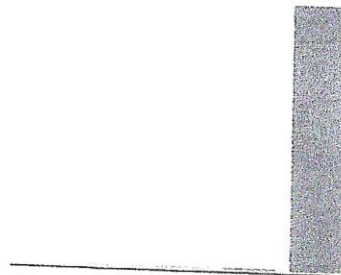
T2

Plant Material

Chromatogram



Cannabinoid Profile



CBGA	THCV	Delta-9-THC	CBC	THCA
0.036	0.145	0.272	0.212	29.074

Cannabinoid Profile by HPLC

0.27%
Delta-9-THC

0.00%
CBD

29.74%
Total Cannabinoids

Cannabinoid	% wt	mg/g
CBGA	0.036	0.36
THCVa	0.145	1.45
Delta-9-THC	0.272	2.72
CBC	0.212	2.12
THCA	29.07	290.74
Total Cannabinoids	29.74	297.4
Calculated Total THC	25.77	257.70
Calculated CBD Yield	0.00	0.00

Calculated Total THC = Delta-9-THC + 0.877 * THCA
 Calculated Maximum CBD Yield = CBD + 0.877 * CBDA

Marin Analytics, LLC
 250 Bel Marin Keys Blvd, Suite D4
 Novato, CA 94949

833-321-TEST / info@marinanalytics.com

Mike Clemmons
 Lab Manager

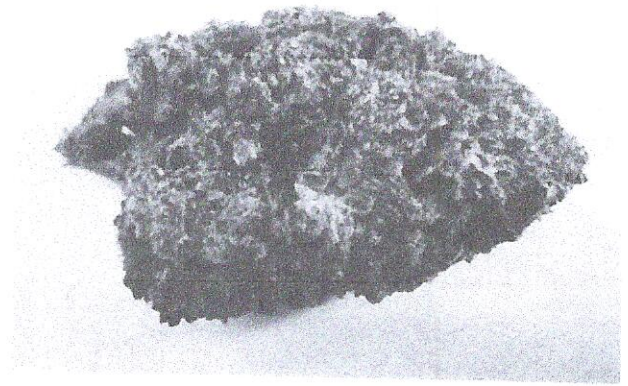
This sample has been tested by Marin Analytics, LLC using valid testing methodologies and a quality system. Values reported relate only to the sample tested. Marin Analytics, LLC makes no claims as to the efficacy, safety, or other risks associated with any detected or non-detected levels of any compounds reported herein. This Certificate shall not be reproduced except in full without the written approval of Marin Analytics, LLC. Copyright 2023 Marin Analytics, LLC All Rights Reserved.



These test results are for Research and Development purposes only

Sample Black Truffle
Strain

0.09% Δ9 THC	7.29% Total CBD	28.35% Total Cannabinoids
Not tested Water Activity	Pass 6.78 Moisture	283.5 mg / g Total Cannabinoids



Harvest/Prod Date

Report Created

3/14/2024

Results Valid Until

3/15/2025

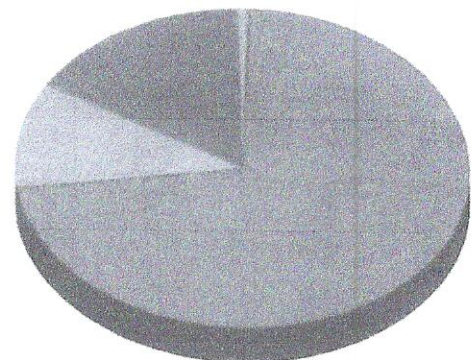
Sample Extracted
3/13/2024 11:37:00

Sample Analyzed
3/13/2024 13:36

Method SOP L0001-R11

Cannabinoids	%Weight	mg/ gram	LOQ(% /w)
Δ9 THC	0.09	0.9	0.06
THCA	20.47	204.7	0.06
Total THC (THCA*0.877)+Δ9THC	18.04	180.4	0.06
CBDA	3.04	30.4	0.06
CBD	4.62	46.2	0.06
CBN	<LOQ	<LOQ)	0.06
Δ8 THC	<LOQ	<LOQ)	0.06
CBC	<LOQ	<LOQ)	0.06
CBGA	0.13	1.3	0.06
CBG	<LOQ	<LOQ)	0.06
CBDV	<LOQ	<LOQ)	0.06
CBDVA	<LOQ	<LOQ)	0.06
THCVA	<LOQ	<LOQ)	0.06
CBDQ	<LOQ	<LOQ)	0.06
HHC	<LOQ	<LOQ)	0.09

● Δ9 THC ● THCA ● CBDA ● CBD
● CBGA



Total THC and Total CBD are calculated values per OAR 333-064-0100. Cannabinoid values for plant matter samples are reported on a dry weight basis. Water activity level is 0.65Aw. LOQ= Limit of Quantitation. NR=Not Reported.

